

KNEER · SÜD
FENSTER

Lived Vision

ENTRANCE DOORS
PRIME MODELS

2021

ALUMINIUM-WOOD

PRIME MODELS 2021

ENTRANCE DOORS
CATEGORY **PREMIUM⁺**

FROM SITE 4

ENTRANCE DOORS
CATEGORY **PREMIUM**

FROM SITE 8

ENTRANCE DOORS
CATEGORY **BASIC⁺**

FROM SITE 14



HT A 21-227

My choice, my entrance door

Whether classic or modern - aluminium-wood entrance doors from KNEER-SÜDFENSTER combine the beauty with the useful. Attractive design meets robust construction with an easy-care surface.

Every detail stands for comfort, durability and functionality. Our entrance doors are individual personalities that leave nothing to be desired.

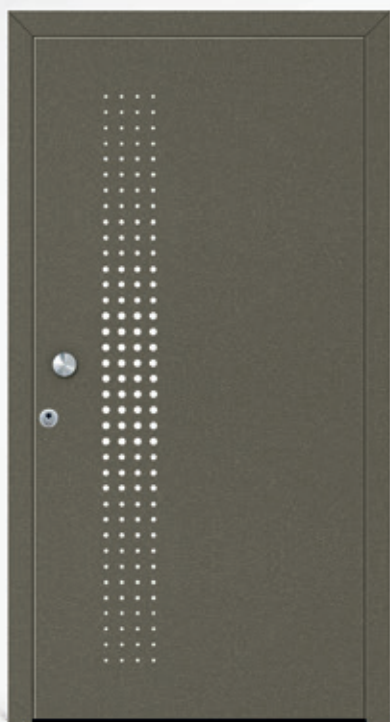
There is actually nothing to add to this - at most a playful key ring.

As a full-range supplier, KNEER SÜDFENSTER produces building elements out of aluminium-wood, wood, aluminium, aluminium-uPVC and uPVC. Windows, lift and slide doors and entrance doors are available all over the world.



ENTRANCE DOORS MODELS	4
COLOURS	18
GLAZING	20
HANDLE BARS	22
INTERIOR HANDLES & EXTERIOR ROSETTES	23
SPECIAL EQUIPMENT	24
SAFETY TECHNOLOGY	26
TECHNICAL DATA	28
OVERVIEW	30
ALSO AVAILABLE	31

PREMIUM⁺



THE
SPECIAL FOR YOUR
HOME



CONNECTION OF NATURE AND TECHNOLOGY

On the outside the powdercoated, highly weather resistant aluminium shell protects the valuable entrance door against weathering and on the inside wood radiates a natural and cozy warmth. Comfort, appearance and functionality are combined.

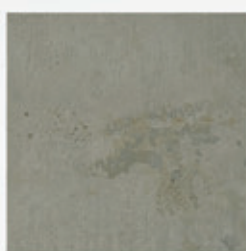
fully motorized lock | fully concealed hinges
included in the price

HT A 21-223

colour HWF-7774-FME volcanic ash
stainless steel knob BA 3048 flattened**
stainless steel rosette



EACH
ENTRANCE DOOR
IS UNIQUE



THE AESTHETIC LIES IN THE RESTRAINT

rough surface embossed with pores:
the concrete-appearance ist timeless and elegant.
The combination with wood inside is an intersting mix:
A unique entrance door with unmistakable appearance
for discerning builders with a faible for the special.

fully motorized lock | fully concealed hinges
included in the price

HT A 21-226

frame colour HWF-RAL7016-FMA
anthracite grey | door leaf concrete look
handle BA 3001

INDIVIDUAL
ENTRANCE DOORS FOR
SPECIAL ACCENTS



HT A 21-227

aluminium-wood entrance door
Rahmen colour HWF-RAL7016-FMA
door leaf outside stainless steel design
fingerprint (possible against surcharge)
handle BA 3030, 1480 mm

PREMIUM⁺



EYE-CATCHER!
CREATE A WELCOMING
ATMOSPHERE



TIMELESS ELEGANT

Behind the charming exterior hides the latest technology and innovative security equipment of resistance class RC2. A modern front door means more protection, security and well-being.

fully motorized lock | LED-handle illumination (without surcharge)
concealed hinges
included in the price

HT A 21-220

colour HWF-RAL7016-FMA anthracite grey
attached handle aluminium
powdercoated silver**



AN ENTRANCE
DOOR WITH MOMENTUM
& DYNAMICS



WELCOME AT HOME

A light and airy feeling of life welcomes you at this front door, which gives your home a very personal touch: Sweeping, dynamic and design-oriented, it reflects the style of the residents.

fully motorized lock | fully concealed hinges
included in the price

HT A 21-221

colour HWF-RAL7016-FMA anthracite grey
curved handle aluminium
powdercoated silver**



HT A 21-220 Farbe HWF-RAL7016-FMA anthracite grey
attached handle aluminium powdercoated silver**
glazing side light Iso light | LED-bar

PREMIUM



ON REQUEST
WITH INTEGRATED
LED-BAR



WELCOMING ATMOSPHERE

A lovingly designed entrance area gives us the feeling of being welcomed with open arms and delights us every day anew. Welcome your guests with a friendly and warm appearance.

HT A 21-215

colour HWF-RAL7016-FMA anthracite grey
internal grip plate



HT A 21-211

colour HWF-RAL9016-FMA traffic white
handle BA 3001 | stainless steel stripes
glazing satinato white



HT A 21-218

colour HWF-RAL9016-FMA traffic white
handle BA 3001 | grooves | glazing satinato
white



HT A 21-215 colour HWF-7774-FME volcanic ash
internal grip plate | LED lighting optional
grooves | glazing side panel Satinato with clear edge

PREMIUM



HT A 21-206

colour HWF-RAL7016-FMA anthracite grey
handle BA 3001 | stainless steel stripes
glazing satinato white



HT A 21-208

colour HWF-RAL7016-FMA anthracite grey
handle BA 3001 | stainless steel stripes
glazing satinato white



HT A 21-213

colour HWF-RAL7016-FMA anthracite grey
handle bar curved, Aluminium
silver anodised**



HT A 21-216

colour HWF-RAL7016-FMA anthracite grey
handle BA 3001 | glass partially sandblasted

HT A 21-213 INSIDE VIEW
Oak cross veneer brushed light



PREMIUM



ON REQUEST

The door leaf can be designed in the interior in the types of wood oak and larch. The cross veneer is executed brushed. The colour differences and rough branches are deliberately emphasized. The veneer of the surface is much more knotty and lively like that of the oak. The expression of the individual veneers can nevertheless vary. The frame is executed in a covering shade, so that on the one hand the traditional and on the other hand modern look of the door comes into its own.

HT A 21-201

colour HWF-RAL9016-FMA traffic white
handle BA 3002 | stainless steel base plate



HT A 21-203

colour HWF-RAL9016-FMA traffic white
handle BA 3002 | stainless steel stripes



HT A 21-205

colour HWF-RAL9016-FMA traffic white
handle BA 3002 | stainless steel applications
glass and house number Iso light
partially sandblasted glass in the number field



BASIS⁺

ALL MODELS
ONLY POSSIBLE WITH ILLUSTRATED
HANDLE



HT A 21-701

colour HWF-RAL7016-FMA anthracite grey
glazing satinato white



HT A 21-702

colour HWF-RAL7016-FMA anthracite grey
glazing satinato white



HT A 21-703

colour HWF-RAL7016-FMA anthracite grey
glazing satinato white



HT A 21-705

colour HWF-RAL7016-FMA anthracite grey
glazing satinato white

HT A 21-701 INSIDE VIEW
colour pine 2842 | glass iso light



BASIS⁺

ALL MODELS
ONLY POSSIBLE WITH ILLUSTRATED
HANDLE



HT A 21-706

colour HWF-RAL9016-FMA traffic white
glazing satinato white



HT A 21-707

colour HWF-RAL9016-FMA traffic white



HT A 21-709

colour HWF-RAL9016-FMA traffic white
stainless steel stripes



HT A 21-710

colour HWF-RAL9016-FMA traffic white
glazing satinato white

HT A 21-709 INSIDE VIEW
colour spruce 3775 | glass Iso light



ALUMINIUM-FARBEN PG1



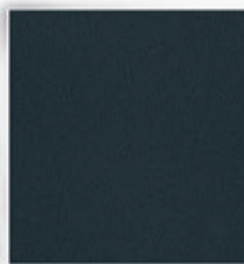
HWF-RAL9016-FMA
traffic white



HWF-RAL7040-FMA
window grey



HWF-RAL7037-FMA
dusty grey



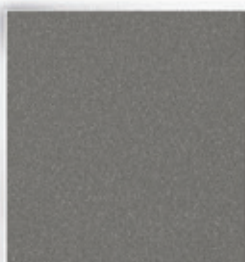
HWF-RAL7016-FMA
anthracite grey



HWF-RAL8017-FMA
chocolate brown



HWF-RAL9006-FME
white aluminium



HWF-RAL9007-FME
grey aluminium



HWF-7774-FME
volcanic ash



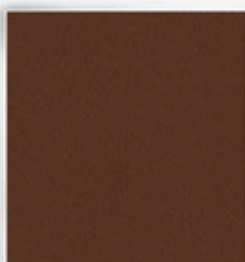
HWF-DB703-FME
DB 703



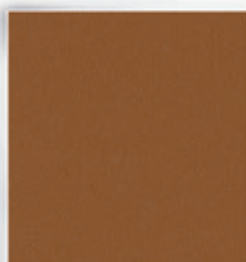
HWF-7773-FME
cast iron



HWF-RAL8014-FMA
sepia brown



HWF-RAL8011-FMA
nut brown



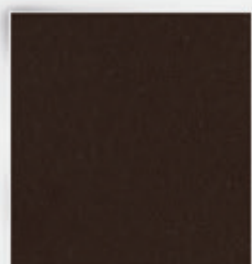
HWF-RAL8003-FMA
clay brown



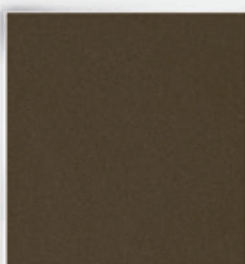
HWF-RAL3004-FMA
purple red



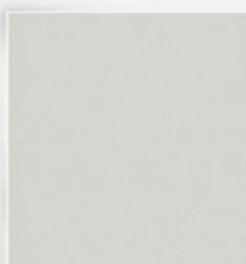
HWF-RAL6005-FMA
moss green



HWF-6667-GMA
alu dark bronze



HWF-6668-GMA
alu middle bronze



HWF-6669-GMA
alu natur

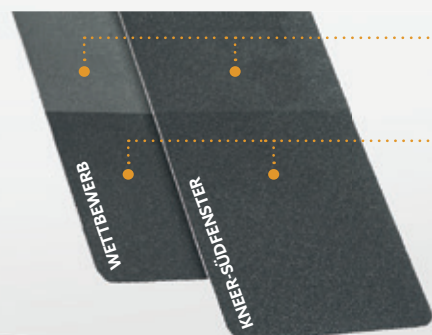
ALUMINIUM - SPECIAL COLOURS

- RAL at choice smooth-matt (pg 2)
- RAL at choice smooth-glossy, fine structure and highly weather resistant as far as possible (pg 3 - 5)

THE FOLLOWING COLOURS ARE NOT AVAILABLE

- NCS, DB and RAL design colour card
- wood decors
- pearl effect

WEATHER TEST



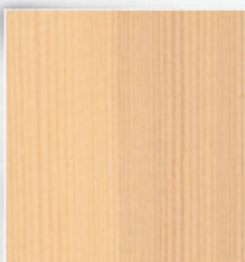
After 10 YEARS OF WEATHERING, the HWF-coating of KNEER-SÜDFENSTER is much less faded

Powder coating in new condition

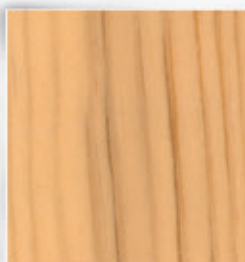
COLOUR WOOD



PINE 2805



PINE 272 C



PINE 283 C



PINE 2720



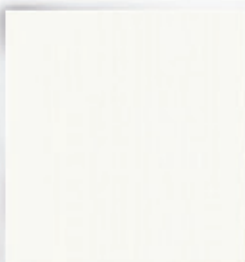
PINE 2732



PINE 2842



PINE 281 J



PINE 2506



PINE 291 L
oiled look



PINE 293 G
oiled look



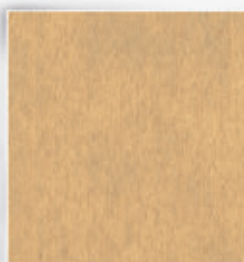
SPRUCE 3775



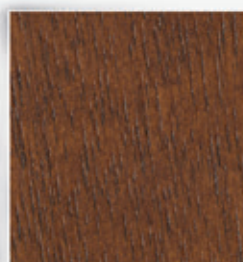
SPRUCE 372 F



SPRUCE 391 F
oiled look



SPRUCE 391 A
oiled look



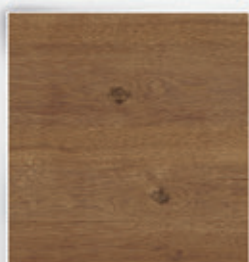
MERANTI 1871*



MERANTI 188 V*



MERANTI 186 Q*



OAK CROSS VENEERED
brushed light*



LARCH CROSS VENEERED
brushed light*

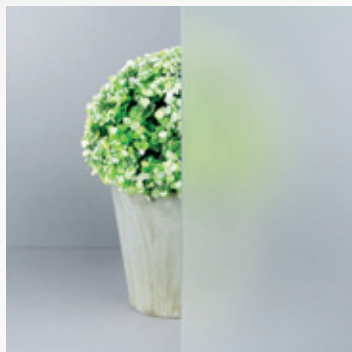
ON REQUEST WITH CROSS VENEER

Additionally you can get the wood types oak and larch. The cross veneers are executed brushed and get a bright colour. The colour differences and rough branches are deliberately emphasized. The veneer of larch is much more knotty and lively as that of the oak. The expression of the individual veneers can nevertheless vary. The frame is executed in a covering shade (RAL 7016), so that on the one hand the traditional and on the other hand modern look of the door comes into its own.

YOUR POSSIBILITIES

GLAZING

In order to provide further individuality of your new entrance door, we offer you special glazing. In addition to the glazing ISO LIGHT, you can choose from these ornaments. You also have the option to choose Satinato with a clear edge.



SATINATO WHITE*



SATINATO WITH CLEAR EDGE



CHINCHILLA WHITE*



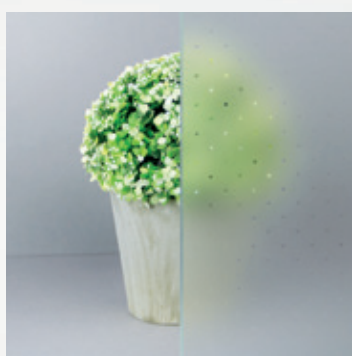
MASTERCARRE WHITE*



SILVIT WHITE



GOTHIK WHITE



MADRAS PAVE WHITE



MADRAS UADI WHITE



BAROCK WHITE



ON REQUEST WITH MIRROR ON THE INSIDE

All doors without glass cutout are perfectly suitable for designing with a large mirror (approx. 30 cm wide). This is a decorative as well as practical design and changes the design in the entrance area.

The following doors are available with mirror:

HT A 21-201 | HT A 21-203 | HT A 21-213 | HT A 21-215

HT A 21-220 | HT A 21-221 | HT A 21-226 | HT A 21-227 | **against surcharge**



HANDLE BARS

The handles can be freely selected for almost each door models. Exeptions are Basic + Models, You get these models with the handles as described on the respective pages.



HANDLE BAR HALF-ROUND

material: stainless steel
dimension and type:

1480 mm - BA 3030
1280 mm - BA 3011
1040 mm - BA 3004



HANDLE BAR ROUND

material: stainless steel
dimension and type:

1480 mm - BA 3001
1200 mm - BA 3003
500 mm - BA 3010



HANDLE BAR JATOBA

material: real wood „Jatoba“
dimension and type:

1480 mm - BA 3002



KNOB ROUND

material: stainless steel
type:

BA 3006



INTERIOR HANDLES & EXTERIOR ROSETTES

All entrance door models will be made with stainless steel interior handle. Execution with lever inside and outside without surcharge (exterior lever is the same as interior lever). You get 5 keys as standard.



INTERIOR HANDLE ROUND

profile cylindre covering: round rosette
material: stainless steel
type: BA 3502



INTERIOR HANDLE ANGULAR

material: stainless steel
type: BA 3506



PLANO-ROSETTE

material: stainless steel



PROFILE CYLINDER

with drilling protection
and reversible key

SPECIAL EQUIPMENT

ACCESS OPTIONS

All doors are equipped as standard with an automatic lock (without E-opener).

By pulling the door, the latch bolts at the top and bottom of the door automatically move 20 mm into the bolting bar. As a result, the door is always locked - without locking with the key. A day trap (also called snapper or latch) is also integrated in the lock, however, the automatic locking must be deactivated for use.

1 E-OPENER

Electric door opener - for using, the automatic lock has to be deactivated manually. The E-opener is integrated in the face plate.

- ✓ Easy opening of the door by actuation of e.g. the domestic intercom system
- ✓ No need to walk to the door

2 AUTOMATIC LOCK WITH M-OPENER

Door opener with motor-driven release - By pulling the door closed the multipoint lock will be activated without locking it. Releasing is done by pressing the handle or for instance by a domestic intercom system. Electrical opening options such as fingerprint or domestic intercom system are overridden by manual relocking.

- ✓ Maximum security without locking
- ✓ The automatic and the motorised locking complement each other
- ✓ Ideal for access system in single and multi-family houses

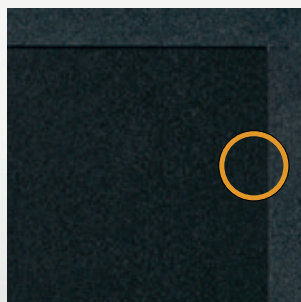
3 FULL MOTORIZED LOCK

Opening and closing is motorized - as if by magic. As soon as the door falls into the lock, the lock independently closed, without any manual closing. The opening of the door is comfortably motorized via door opener the intercom system or via access systems.

- ✓ Maximum comfort and security
- ✓ Increased tightness
- ✓ Panic function as standard, opening the door from inside is always guaranteed

FULLY CONCEALED HINGES

All **premium +** entrance doors are equipped with fully concealed hinges as standard. You have the option of upgrading your entrance door with fully concealed hinges.



FINGERPRINT ACCESS SYSTEM INCLUDING M-OPENER



The fingerprint includes the M-opener listed above.
The automatic locking and unlocking motor is thus guaranteed and thus the safety.

Electrical opening options such as fingerprint or domestic intercom system are overridden by manual relocking.

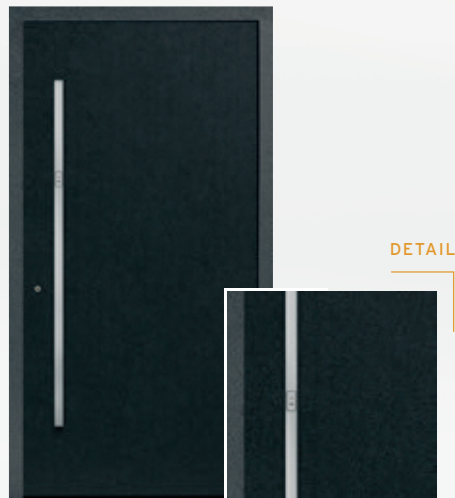
ADVANTAGES

- comfortable operation, you don't have to carry a key
- external access is not only possible via the key but also via the fingerprint - you have the choice
- the door is always closed and thus provides maximum security
- our fingers are unique and cannot be replicated or get lost, the fingerprint ages with you
- pull the taught finger over the scanner, the green light will illuminate and the door will unlock



VARIANT 1 - INTEGRATED IN THE DOOR LEAF

fingerprint integrated in the door leaf



VARIANT 2 - INTEGRATED IN THE HANDLE BAR

push bar half-round with fingerprint available in two lengths.
Installation height of the fingerprint approx. between 1200 mm and 1600 mm depending on the door height and mode.

push bar length 1280 mm - BA 3041

push bar length 1480 mm - BA 3042

or integrated in the handle bar of model HT A 21-213

fingerprint integrated in the door leaf

OPTIONALLY SINGLE SPACE MONITORING

With this variant you have the option to delete or shut down individual fingers.
Controllable only via App (if you have a smartphone with Bluetooth-function).

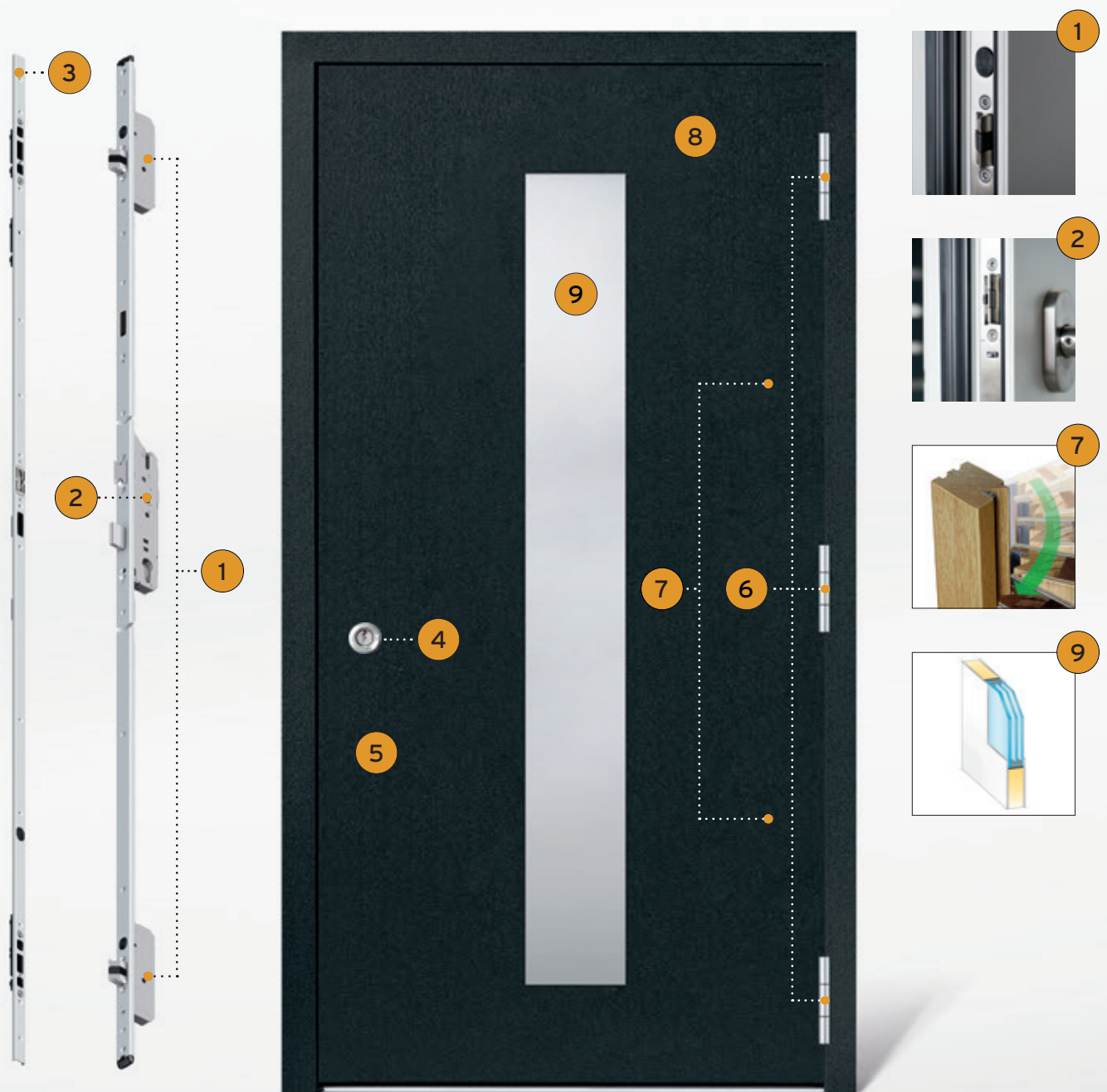
SAFETY TECHNOLOGY

SECURITY AND SAFETY FOR YOUR HOME

Your new entrance door should be inviting for visitors and deterrent for burglars.

First and foremost, it must guarantee safety because burglars choose this way more and more often.

Even with the basic equipment we therefore attach great importance to the solid safety mechanism.



With our standard safety components these models achieve RC2 tested:

HT A 21-201 | HT A 21-203 | HT A 21-213 | HT A 21-215 | HT A 21-220 | HT A 21-221 und HT A 21-222



STANDARD SAFETY COMPONENTS

- 1 Lock tested corresponding to security class RC2:
When closing the door the latch bolts drive 20 mm into the bolting bar via a magnetic impuls at the top and bottom of the door. Therefore the door is always closed - without re-closing with a key.
- 2 The main bolt can be locked with a key turn - the lever blocks for control purposes, as a child safety lock and for maximum security.
- 3 Continuous bolting bar:
protection against prying on the lock side
- 4 Cylinder with drill protection
- 5 Interior handle in stainless steel with exterior ring rosette:
serves as a pull protection for the cylinder
- 6 Stable roller conveyor:
triple security on the hinge side
- 7 Keilfalz as an additional prying protection:
Our patented Keilfalz on the hinge side is another pry-proof protection
- 8 Strong and massiv aluminium panel:
meets RC2 requirements

ON REQUEST THE **PLUS** IN SAFETY

- 9 P4A safety glazing:
One pane consists of a composite of two panes with integrated security foil.
Furthermore, the glazing is glued circumferential with a special adhesive in the glass cut-out.
Thus, the glass connection is secured.

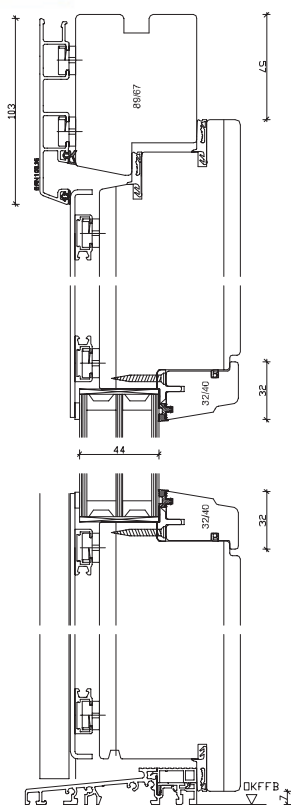
By using a P4A safety glazing the following models are RC2 tested:

HT A 21-205 | HT A 21- 206 | HT A 21- 208 | HT A 21- 211 | HT A 21- 216 | HT A 21- 218 and HT A 21- 223

TECHNICAL DATA

MATERIAL	aluminium-wood
SYSTEM	AHT 3-95 / AHT 3-115 (system cannot be selected at Basic+) with Classic- or Art-shell
GASKETS	3 pieces
GLAZING	triple glazing U_g 0,7 W/m ² K / U_g 0,6 W/m ² K with warm edge
WOOD SPECIES	pine, meranti or spruce
WOOD SURFACE	4-layer colour application, colours according to KNEER-SÜDFENSTER colour chart
ALUMINIUM SURFACE	Aluminium shell powdercoated highly weather resistant door with panel in the standard colours according to aluminium colour chart (wood decors are not possible) special colours according to RAL are possible fine structur and highly weather resistant if possible
LOCK	automatic-lock as multipoint locking with daytime function, without E-opener
CYLINDER	profile cylinder with emergency and danger function, drill protection and 5 keys
HINGES	3 concealed hinges
MAX. SIZE	1150 x 2250 mm frame outer dimension
MIN. SIZE	980 x 1980 mm frame outer dimension
OTHER	patented Keilfalz on the hinge side as a prying protection

AHT 3-95

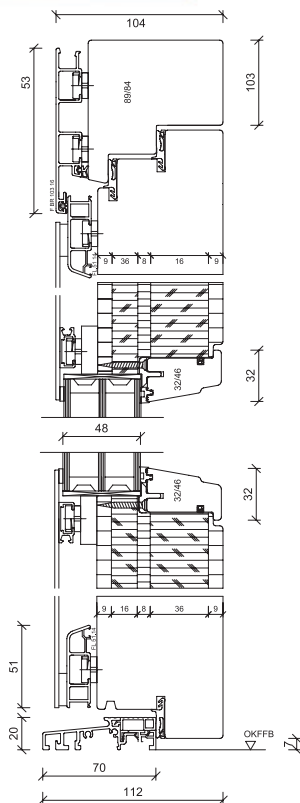
U_D-VALUE *

MODELL	SYSTEM	PINE / MERANTI	SPRUCE
HT A 21-201	3-95	0,75 W/m ² K	0,71 W/m ² K
	3-115	0,68 W/m ² K	0,64 W/m ² K
HT A 21-203	3-95	0,75 W/m ² K	0,71 W/m ² K
	3-115	0,68 W/m ² K	0,64 W/m ² K
HT A 21-205	3-95	0,84 W/m ² K	0,79 W/m ² K
	3-115	0,76 W/m ² K	0,72 W/m ² K
HT A 21-206	3-95	0,83 W/m ² K	0,79 W/m ² K
	3-115	0,75 W/m ² K	0,71 W/m ² K
HT A 21-208	3-95	0,85 W/m ² K	0,81 W/m ² K
	3-115	0,77 W/m ² K	0,73 W/m ² K
HT A 21-211	3-95	0,83 W/m ² K	0,78 W/m ² K
	3-115	0,75 W/m ² K	0,71 W/m ² K
HT A 21-213	3-95	0,75 W/m ² K	0,71 W/m ² K
	3-115	0,68 W/m ² K	0,64 W/m ² K
HT A 21-215	3-95	0,75 W/m ² K	0,71 W/m ² K
	3-115	0,68 W/m ² K	0,64 W/m ² K
HT A 21-216	3-95	0,86 W/m ² K	0,81 W/m ² K
	3-115	0,77 W/m ² K	0,73 W/m ² K
HT A 21-218	3-95	0,84 W/m ² K	0,79 W/m ² K
	3-115	0,76 W/m ² K	0,72 W/m ² K
HT A 21-220	3-95	0,75 W/m ² K	0,71 W/m ² K
	3-115	0,68 W/m ² K	0,64 W/m ² K
HT A 21-221	3-95	0,75 W/m ² K	0,71 W/m ² K
	3-115	0,68 W/m ² K	0,64 W/m ² K
HT A 21-222	3-95	0,75 W/m ² K	0,71 W/m ² K
	3-115	0,68 W/m ² K	0,64 W/m ² K
HT A 21-223	3-95	0,83 W/m ² K	0,78 W/m ² K
	3-115	0,75 W/m ² K	0,71 W/m ² K

TECHNICAL DATA

MATERIAL	aluminium-wood
SYSTEM	AHT 3-105 Modern (system cannot be selected at Basic +)
GASKETS	3 pieces
GLAZING	triple glazing U_g 0,7 W/m ² K / U_g 0,6 W/m ² K with warm edge
WOOD SPECIES	pine, meranti or spruce
WOOD SURFACE	4-layer colour application, colours according to KNEER-SÜDFENSTER colour chart
ALUMINIUM SURFACE	aluminium shell powdercoated highly weather resistant door with panel in the standard colours according to aluminium colour chart (wood decors are not possible) special colours according to RAL are possible fine structur and highly weather resistant if possible
LOCK	automatic-lock as multipoint locking with daytime function, without E-opener
CYLINDER	profile cylinder with emergency and danger function, drill protection and 5 keys
HINGES	3 concealed hinges
MAX. SIZE	1150 x 2250 mm Rahmenaußenmaß
MIN. SIZE	980 x 1980 mm Rahmenaußenmaß

AHT 3-105 MODERN



U_D-VALUE *

MODELL	PINE / MERANTI	SPRUCE
HT A 21-201	0,78 W/m ² K	0,73 W/m ² K
HT A 21-203	0,78 W/m ² K	0,73 W/m ² K
HT A 21-205	0,85 W/m ² K	0,80 W/m ² K
HT A 21-206	0,84 W/m ² K	0,80 W/m ² K
HT A 21-208	0,86 W/m ² K	0,82 W/m ² K
HT A 21-211	0,84 W/m ² K	0,80 W/m ² K
HT A 21-213	0,78 W/m ² K	0,73 W/m ² K
HT A 21-215	0,73 W/m ² K	0,73 W/m ² K
HT A 21-216	0,81 W/m ² K	0,81 W/m ² K
HT A 21-218	0,81 W/m ² K	0,81 W/m ² K
HT A 21-220	0,73 W/m ² K	0,73 W/m ² K
HT A 21-221	0,73 W/m ² K	0,73 W/m ² K
HT A 21-222	0,73 W/m ² K	0,73 W/m ² K
HT A 21-223	0,80 W/m ² K	0,80 W/m ² K

* Calculation basis U_D-value according to DIN EN ISO 10077-1 (door size 1230 x 2180 mm)

OVERVIEW

	BASIC ⁺	PREMIUM	PREMIUM ⁺
colour white (HWF-RAL9016-FMA traffic white)	✓	✓	✓
colours pg 1-2	✓	✓	✓
colours pg 3-5	✗	●	●
profile cylinder	✓	✓	✓
electric opener	●	●	●
automatic lock as multipoint locking with daytime function	✓	✓	●
automatic lock as multipoint locking with M-Opener	●	●	●
full motorized lock	●	●	✓
exposed hinges	✓	✓	●
concealed hinges	●	●	✓
handles freely selectable (if technically possible)	✗	✓	✓
glazing freely selectable	✗	✓	✓
fingerprint in the door leaf (if technically possible)	●	●	●
fingerprint in the handle (if technically possible)	●	●	●
safety execution RC2 *	●	●	✓

already included ✓

not possible ✗

selectable ●

ALUMINIUM-WOOD ENTRANCE DOORS

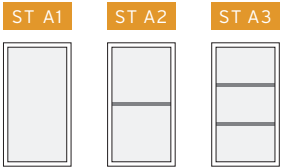
ALSO AVAILABLE

SIDE LIGHTS

ST A 1, ST A 2 and ST A 3 possible

GLAZING

VSG 6 mm



SYSTEM

Entrance door system AHT 3-115	ineligible by Basic +
Entrance door system AHT 3-105 Modern	ineligible by Basic +
Side light AHT 3-115/AHT 3-105 Modern	ineligible by Basic +

ACCESS OPTIONS

- Electric opener
- Automatic lock as multipoint locking with M-Opener
- Full motorized lock without adaptor

SECURITY / MISCELLANEOUS

- Safety execution RC2 for entrance door and side lights
- Mirror on the inside of the entrance door
- LED lighting HT A 21-215
- Sandblasted glass with clear edge or clear stripes (entrance door and/or side light) per door or side light

COLOURS

pg 3-5

NOTE

There might be slight deviations in colour due to printing process.

KNEER · SÜD **FENSTER**

Lived Vision



KNEER GmbH **Fenster und Türen**

Horst-Kneer-Straße 1
D-72589 Westerheim
phone: +49 (0) 7333 / 83-0
e-mail: info@kneer.de

SÜD-FENSTERWERK **GmbH & Co. Betriebs-KG**

Rothenburger Straße 39
D-91625 Schnelldorf
phone: +49 (0) 7950 / 81-0
e-mail: info@suedfenster.de

SÜD-BAUELEMENTE GmbH

Ludwig-Erhard-Straße 4
D-03238 Massen
phone: +49 (0) 3531 / 799-114
e-mail: info@suedfenster.de



WWW.KNEER-SUEDFENSTER.DE

Your Kneer-Südfenster specialized dealer: