

**KNEER · SÜD**  
**FENSTER**

Lived Vision

ENTRANCE DOORS  
**PRIME** MODELS

2021

ALUMINIUM

# PRIME MODELS 2021

ENTRANCE DOORS  
CATEGORY **PREMIUM<sup>+</sup>**

FROM SITE 4

ENTRANCE DOORS  
CATEGORY **PREMIUM**

FROM SITE 8

ENTRANCE DOORS  
CATEGORY **BASIC<sup>+</sup>**

FROM SITE 12

ENTRANCE DOORS  
CATEGORY **BASIC**

SITE 22



HT A 21-223

# My choice, my entrance door

Whether classic or modern - aluminium entrance doors from KNEER-SÜDFENSTER combine the beauty with the useful. Attractive design meets robust construction with an easy-care surface. Every detail stands for comfort, durability and functionality. Our entrance doors are individual personalities that leave nothing to be desired.

**There is actually nothing to add to this - at most a playful key ring.**

As a full-range supplier, KNEER SÜDFENSTER produces building elements out of aluminium-wood, wood, aluminium, aluminium-uPVC and uPVC. Windows, lift and slide doors and entrance doors are available all over the world.



ENTRANCE DOORS MODELS	4
ALUMINIUM COLOURS	24
GLAZING	25
HANDLE BARS / INTERIOR HANDLES	26
SASH EXECUTIONS	27
SPECIAL EQUIPMENT	28
SAFETY TECHNOLOGY	30
TECHNICAL DATA	32
OVERVIEW	34
ALSO AVAILABLE	35

# PREMIUM<sup>+</sup>



DOOR LEAF  
WITH CERAMICS FOR UNIQUE  
ACCENTS



## ROBUST, SCRATCH RESISTANT AND UNCOMPLICATED

Even it's a rather old material ceramics is nowadays a versatile high-tech material - extremely robust. The model ceramics Corten remembers to a rust steel plate tanned by wind and weather, scratch resistant and uncomplicated.

fully motorized lock | fully concealed hinges  
included in the price

### HT A 21-225

frame: colour HWF-RAL7016-FMA anthracite grey  
door leaf Corten | handle BA 3001\*\*



EACH  
ENTRANCE DOOR  
IS UNIQUE



## VINTAGE-LOOK

If you value a particularly distinctive door look, this vintage look entrance door is your choice! The natural grain looks lively and thus brings out the character from reclaimed wood in its unique form. The wood veneer is possible only on the outside.

fully motorized lock | fully concealed hinges  
included in the price

### HT A 21-224

frame: colour HWF-RAL7016-FMA anthracite grey  
door leaf real wood surface oak oiled  
handle and rosette blacksteel\*\*\*

THE  
SPECIAL FOR YOUR  
HOME



### HT A 21-223

aluminium entrance door  
Farbe: HWF-7773-FME cast iron  
stainless steel knob BA 3048 flattened\*\*\*  
stainless steel rosette

# PREMIUM<sup>+</sup>



EYE-CATCHER!  
CREATE A WELCOMING  
ATMOSPHERE



## TIMELESS ELEGANT

Behind the charming exterior hides the latest technology and innovative security equipment of resistance class RC2. A modern front door means more protection, security and well-being.

fully motorized lock | LED-handle illumination (without surcharge)  
concealed hinges  
included in the price

### HT A 21-220

colour HWF-RAL7016-FMA anthracite grey  
attached handle aluminium  
powdercoated silver\*\*



AN ENTRANCE  
DOOR WITH MOMENTUM  
& DYNAMICS



## WELCOME AT HOME

A light and airy feeling of life welcomes you at this front door, which gives your home a very personal touch: Sweeping, dynamic and design-oriented, it reflects the style of the residents.

fully motorized lock | fully concealed hinges  
included in the price

### HT A 21-221

colour HWF-RAL7016-FMA anthracite grey  
curved handle aluminium  
powdercoated silver\*\*



HT A 21-220 Farbe HWF-RAL7016-FMA anthracite grey  
attached handle aluminium powdercoated silver\*\*  
glazing side light Iso light | LED-bar

# PREMIUM



**HT A 21-205**

colour HWF-RAL9016-FMA traffic white  
handle BA 3001 | stainless steel applications  
glass and house number Iso light  
partially sandblasted glass in the number field



**HT A 21-206**

colour HWF-RAL7016-FMA anthracite grey  
handle BA 3001 | stainless steel stripes  
glazing satinato white



**HT A 21-208**

colour HWF-RAL9016-FMA traffic white  
handle BA 3001 | stainless steel stripes  
glazing satinato white



**HT A 21-211**

colour HWF-RAL7016-FMA anthracite grey  
handle BA 3001 | stainless steel stripes  
glazing satinato white



**HT A 21-215**

colour HWF-RAL9016-FMA traffic white  
internal grip plate



**HT A 21-218**

colour HWF-RAL7016-FMA anthracite grey  
handle BA 3001 | grooves | glazing  
satinato white



HT A 21-215 colour HWF-7774-FME volcanic ash  
internal grip plate | LED lighting optional  
grooves | glazing side panel Satinato with clear edge

PREMIUM



**HT A 21-201**  
colour HWF-RAL9016-FMA traffic white  
handle BA 3001 | stainless steel base plate



**HT A 21-203**  
colour HWF-RAL9016-FMA traffic white  
handle BA 3001 | stainless steel stripes



**HT A 21-213**  
colour HWF-RAL7016-FMA anthracite grey  
curved handle aluminium  
powdercoated silver\*\*



**HT A 21-216**  
colour HWF-RAL7016-FMA anthracite grey  
handle BA 3001 | glass partially sandblasted

\* price applies to colours pg1 and pg2  
\*\* HT A 21-213 only available with illustrated handle



BASIC<sup>+</sup>

ALL MODELS  
ONLY WITH THE SHOWN HANDLES  
AVAILABLE



HT A 21-702  
colour HWF-RAL9016-FMA traffic white  
glazing satinato white



HT A 21-705  
colour HWF-RAL9016-FMA traffic white  
glazing satinato white



HT A 21-707  
colour HWF-RAL7016-FMA anthracite grey



HT A 21-709  
colour HWF-RAL7016-FMA anthracite grey  
stainless steel stripes



HT A 21-707 colour HWF-RAL9016-FMA traffic white

BASIC<sup>+</sup>

ALL MODELS  
ONLY WITH THE SHOWN HANDLES  
AVAILABLE



HT A 21-701

colour HWF-RAL7016-FMA anthracite grey  
glazing satinato white



HT A 21-703

colour HWF-RAL7016-FMA anthracite grey  
glazing satinato white



HT A 21-706

colour HWF-RAL7016-FMA anthracite grey  
glazing satinato white



HT A 21-710

colour HWF-RAL7016-FMA anthracite grey  
glazing satinato white



HT A 21-706 colour HWF-RAL9007-FME grey aluminium  
glazing Iso light

# BASIC<sup>+</sup>

ALL  
MODELS  
ONLY WITH  
THE SHOWN HANDLES  
AVAILABLE



**HT A 21-117**

colour HWF-RAL9016-FMA traffic white  
inside: below without ornamental frame  
glazing bars between the exterior panes  
glazing satinato white



**HT A 21-113**

colour HWF-RAL7016-FMA anthracite grey  
inside: below without cassette and ornamental  
frame | glazing bars between the exterior panes  
glazing satinato white



**HT A 21-122**

colour HWF-RAL9016-FMA traffic white  
inside: below without cassette and ornamen-  
tal frame | glazing satinato white



**HT A 21-123**

colour HWF-RAL7016-FMA anthracite grey  
glazing satinato white



**HT A 21-124**

colour HWF-RAL9016-FMA traffic white  
inside: below without cassette and ornamental  
frame | simulated divided lites (both sides)  
glazing satinato white



**HT A 21-125**

colour HWF-RAL7016-FMA anthracite grey  
decorative rosette only outside  
glazing satinato white



HT A 21-113 colour HWF-RAL9016-FMA traffic white  
glazing Iso light | inside: below without cassette and  
ornamental frame | glazing bars between the exterior panes

# BASIC<sup>+</sup>

ALL MODELS  
ONLY WITH THE SHOWN HANDLES  
AVAILABLE



**HT A 21-105**

colour HWF-RAL9016-FMA traffic white  
glazing satinato white



**HT A 21-106**

colour HWF-RAL9016-FMA traffic white  
glazing satinato white



**HT A 21-108**

colour HWF-RAL9016-FMA traffic white  
glazing satinato white



**HT A 21-120**

colour HWF-RAL9016-FMA traffic white  
glazing satinato white



HT A 21-106 colour HWF-RAL7016-FMA anthracite grey  
glazing satinato white

BASIC<sup>+</sup>

ALL MODELS  
ONLY WITH THE SHOWN HANDLES  
AVAILABLE



HT TM 21-107  
colour HWF-RAL7016-FMA anthracite grey  
glazing satinato white



HT TM 21-115  
colour HWF-RAL7016-FMA anthracite grey  
glazing satinato white



HT TM 21-119  
colour HWF-RAL7016-FMA anthracite grey  
stainless steel stripes



HT TM 21-126  
colour HWF-RAL7016-FMA anthracite grey



HT A 21-119 colour HWF-RAL7016-FMA anthracite grey  
glazing satinato white

# BASIC

ALL  
MODELS  
ONLY WITH  
THE SHOWN HANDLES  
AVAILABLE



**HT A 21-127**  
colour HWF-RAL7016-FMA anthracite grey  
glazing satinato white



**HT A 21-128**  
colour HWF-RAL9016-FMA traffic white  
glazing satinato white



**HT A 21-129**  
colour HWF-RAL7016-FMA anthracite grey  
glazing satinato white



**HT A 21-131**  
colour HWF-RAL9016-FMA traffic white  
glazing satinato white



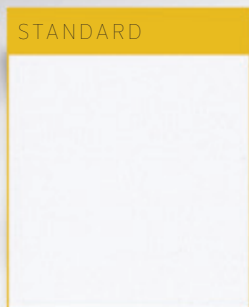
**HT A 21-132**  
colour HWF-RAL7016-FMA anthracite grey  
glazing satinato white



**HT A 21-133**  
colour HWF-RAL9016-FMA traffic white



# ALUMINIUM COLOURS PG1



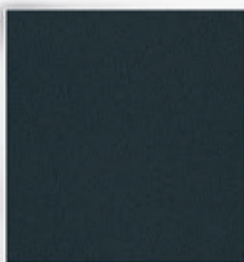
HWF-RAL9016-FMA  
traffic white



HWF-RAL7040-FMA  
window grey



HWF-RAL7037-FMA  
dusty grey



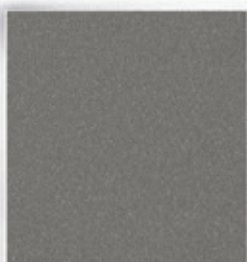
HWF-RAL7016-FMA  
anthracite grey



HWF-RAL8017-FMA  
chocolate brown



HWF-RAL9006-FME  
white aluminium



HWF-RAL9007-FME  
grey aluminium



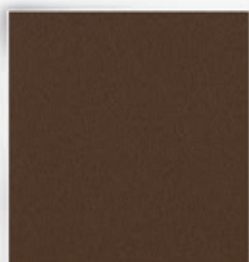
HWF-7774-FME  
volcanic ash



HWF-DB703-FME  
DB 703



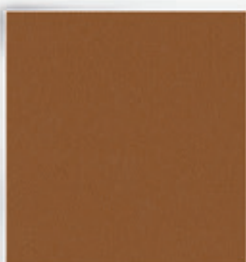
HWF-7773-FME  
cast iron



HWF-RAL8014-FMA  
sepia brown



HWF-RAL8011-FMA  
nut brown



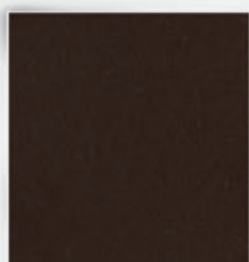
HWF-RAL8003-FMA  
clay brown



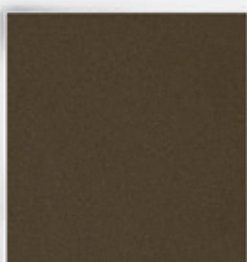
HWF-RAL3004-FMA  
purple red



HWF-RAL6005-FMA  
moss green



HWF-6667-GMA  
alu dark bronze



HWF-6668-GMA  
alu middle bronze



HWF-6669-GMA  
alu natur

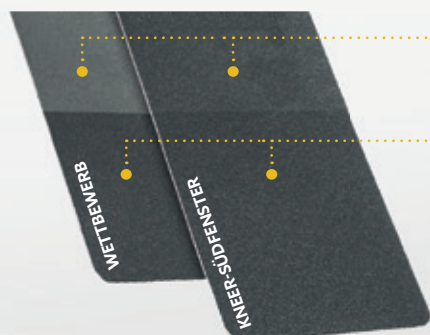
## ALUMINIUM - SPECIAL COLOURS

- RAL at choice smooth-matt (pg 2)
- RAL at choice smooth-glossy, fine structure and highly weather resistant as far as possible (pg 3 - 5)

## THE FOLLOWING COLOURS ARE NOT AVAILABLE

- NCS, DB and RAL design colour card
- wood decors
- pearl effect

## WEATHER TEST



After 10 YEARS OF WEATHERING, the HWF-coating of KNEER-SÜDFENSTER is much less faded

Powder coating in new condition

## YOUR POSSIBILITIES

# GLAZING

In order to provide further individuality of your new entrance door, we offer you special glazing. In addition to the glazing Iso light, you can choose from these ornaments. You also have the option to choose Satinato with a clear edge.



SATINATO WHITE\*



SATINATO WITH CLEAR EDGE



CHINCHILLA WHITE\*



MASTERCARRE WHITE\*



SILVIT WHITE



GOTHIK WHITE



MADRAS PAVE WHITE



MADRAS UADI WHITE



BAROCK WHITE

\* only the marked ornaments are possible in Basic +

# HANDLE BARS / INTERIOR HANDLES



## HANDLE BAR HALF-ROUND

material: stainless steel  
dimension and type:

1480 mm - BA 3030  
1280 mm - BA 3011  
1040 mm - BA 3004



## HANDLE BAR ROUND

material: stainless steel  
dimension and type:

1480 mm - BA 3001  
1200 mm - BA 3003  
500 mm - BA 3010



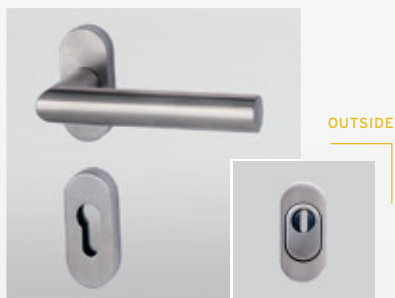
## HANDLE BAR „JATOBA“

material: real wood „Jatoba“  
dimension and type:

1480 mm - BA 3002

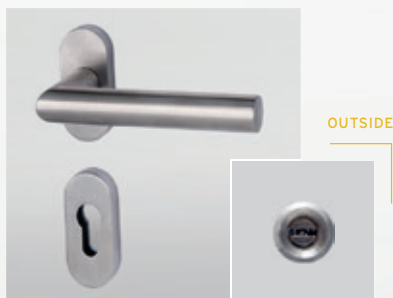
## INTERIOR HANDLES & EXTERIOR ROSETTES

All entrance door models will be made with stainless steel interior handle. Execution with lever inside and outside without surcharge (exterior lever is the same as interior lever). You get 5 keys as standard.



## PROFILE CYLINDER COVERAGE FOR INSERT PANEL

handle inside: oval  
material: stainless steel  
type: BA 3503



## PROFILE CYLINDER COVERAGE FOR ATTACHMENT PANEL

handle inside: oval  
material: stainless steel  
type: BA 3503



PROFILE CYLINDER  
with drilling protection  
and reversible key

# SASH EXECUTIONS

## INSERT PANEL



- classic view through attachment hinges
- offset between sash frame and panel visible



### POSSIBLE WITH THE FOLLOWING MODELS

21-105, 21-106, 21-107, 21-108, 21-113, 21-115, 21-117  
21-119, 21-120, 21-122, 21-123, 21-124, 21-125, 21-126

## ATTACHMENT PANEL ONE-SIDED



- modern, high quality look through shapely roller conveyors
- from the outside no unaesthetic offset between sashframe and panel visible
- fingerprint possible
- execution in safety class RC2 possible



### POSSIBLE WITH THE FOLLOWING MODELS

21-701, 21-702, 21-703, 21-705  
21-706, 21-707, 21-709, 21-710

## ATTACHMENT PANEL BOTH-SIDED



- modern, high quality look through shapely roller conveyors
- from the outside no unaesthetic offset between sashframe and panel visible
- fingerprint possible
- execution in safety class RC2 possible



### POSSIBLE WITH THE FOLLOWING MODELS

21-201, 21-203, 21-205, 21-206, 21-208, 21-211  
21-213, 21-215, 21-216, 21-218, 21-220, 21-221  
21-223, 21-224, 21-225

# SPECIAL EQUIPMENT

## ACCESS OPTIONS

All doors are equipped as standard with an automatic lock (without E-opener).

By pulling the door, the latch bolts at the top and bottom of the door automatically move 20 mm into the bolting bar. As a result, the door is always locked - without locking with the key. A day trap (also called snapper or latch) is also integrated in the lock, however, the automatic locking must be deactivated for use.

### 1 E-OPENER

Electric door opener - for using, the automatic lock has to be deactivated manually. The E-opener is integrated in the face plate.

- ✓ Easy opening of the door by actuation of e.g. the domestic intercom system
- ✓ No need to walk to the door

### 2 AUTOMATIC LOCK WITH M-OPENER

Door opener with motor-driven release - By pulling the door closed the multipoint lock will be activated without locking it. Releasing is done by pressing the handle or for instance by a domestic intercom system. Electrical opening options such as fingerprint or domestic intercom system are overridden by manual relocking.

- ✓ Maximum security without locking
- ✓ The automatic and the motorised locking complement each other
- ✓ Ideal for access system in single and multi-family houses

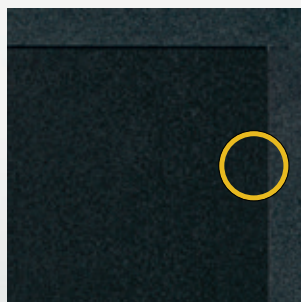
### 3 FULL MOTORIZED LOCK

Opening and closing is motorized - as if by magic. As soon as the door falls into the lock, the lock independently closed, without any manual closing. The opening of the door is comfortably motorized via door opener the intercom system or via access systems.

- ✓ Maximum comfort and security
- ✓ Increased tightness
- ✓ Panic function as standard, opening the door from inside is always guaranteed

## FULLY CONCEALED HINGES

All **premium +** entrance doors are equipped with fully concealed hinges as standard. You have the option of upgrading your entrance door with fully concealed hinges.



## FINGERPRINT ACCESS SYSTEM INCLUDING M-OPENER

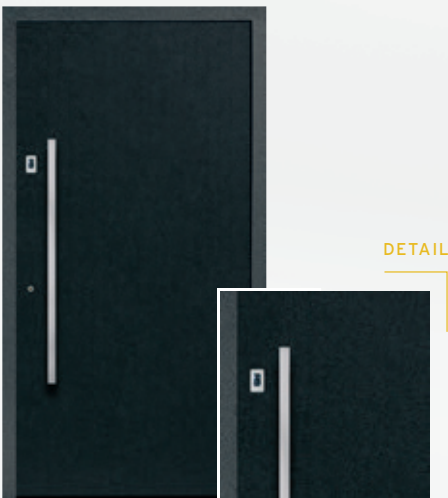


The fingerprint includes the M-opener listed above.  
The automatic locking and unlocking motor is thus guaranteed and thus the safety.

Electrical opening options such as fingerprint or domestic intercom system are overridden by manual relocking.

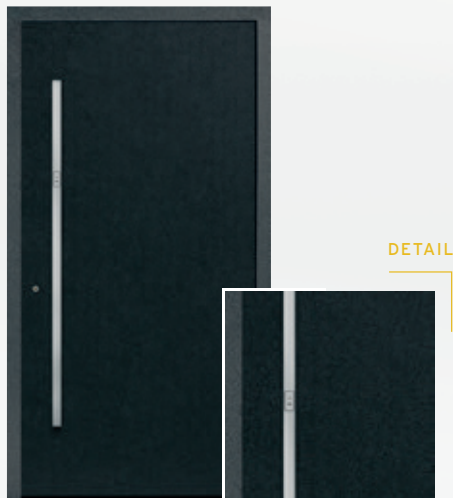
### ADVANTAGES

- comfortable operation, you don't have to carry a key
- external access is not only possible via the key but also via the fingerprint - you have the choice
- the door is always closed and thus provides maximum security
- our fingers are unique and cannot be replicated or get lost, the fingerprint ages with you
- pull the taught finger over the scanner, the green light will illuminate and the door will unlock



VARIANT 1 - INTEGRATED IN THE DOOR LEAF

fingerprint integrated in the door leaf



VARIANT 2 - INTEGRATED IN THE HANDLE BAR

push bar half-round with fingerprint available in two lengths.  
Installation height of the fingerprint approx. between 1200 mm and 1600 mm depending on the door height and mode.

push bar length 1280 mm - BA 3041

push bar length 1480 mm - BA 3042

or integrated in the handle bar of model HT A 21-213

fingerprint integrated in the door leaf

### OPTIONALLY SINGLE SPACE MONITORING

With this variant you have the option to delete or shut down individual fingers.  
Controllable only via App (if you have a smartphone with Bluetooth-function).

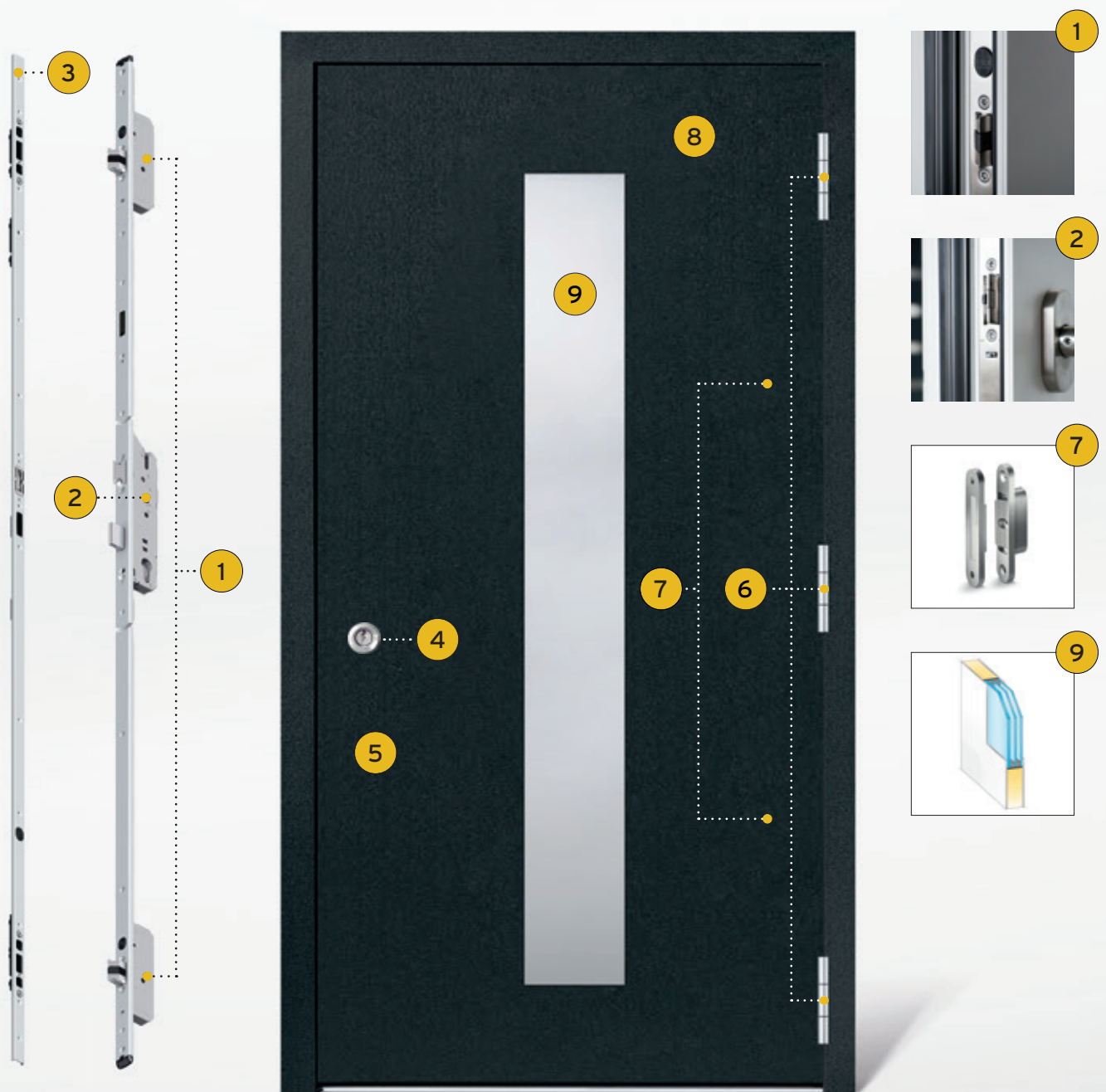
# SAFETY TECHNOLOGY

## SECURITY AND SAFETY FOR YOUR HOME

Your new entrance door should be inviting for visitors and deterrent for burglars.

First and foremost, it must guarantee safety because burglars choose this way more and more often.

Even with the basic equipment we therefore attach great importance to the solid safety mechanism.



With our standard safety components these models achieve RC2 tested:

HT A 21-201 | HT A 21-203 | HT A 21-213 | HT A 21-215 | HT A 21-220 | HT A 21-221 and HT A 21-222



## STANDARD SAFETY COMPONENTS

- 1 Lock tested corresponding to security class RC2:  
When closing the door the latch bolts drive 20 mm into the bolting bar via a magnetic impuls at the top and bottom of the door. Therefore the door is always closed - without re-closing with a key.
- 2 The main bolt can be locked with a key turn - the lever blocks for control purposes, as a child safety lock and for maximum security.
- 3 Continuous bolting bar:  
protection against prying on the lock side
- 4 Cylinder with drill protection
- 5 Interior handle in stainless steel with exterior ring rosette:  
serves as a pull protection for the cylinder
- 6 Stable roller conveyor:  
triple security on the hinge side
- 7 Two hinge-side securities:  
the opposite wedges get caught when the door is closed and offer additional protection against prying on the hinge side
- 8 Strong and massiv aluminium panel:  
meets RC2 requirements

### ON REQUEST THE **PLUS** IN SAFETY

- 9 P4A safety glazing:  
One pane consists of a composite of two panes with integrated security foil.  
Furthermore, the glazing is glued circumferential with a special adhesive in the glass cut-out.  
Thus, the glass connection is secured.

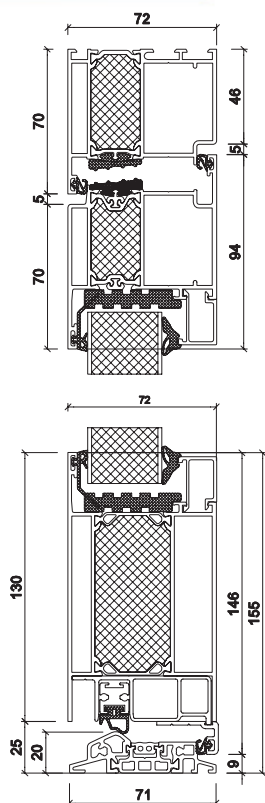
By using a P4A safety glazing the following models are RC2 tested:

HT A 21-205 | HT A 21- 206 | HT A 21- 208 | HT A 21- 211 | HT A 21- 216 | HT A 21- 218 and HT A 21- 223

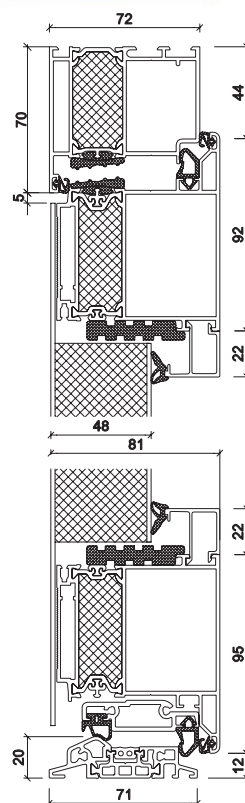
# TECHNICAL DATA

<b>MATERIAL</b>	aluminium
<b>SYSTEM</b>	AT 72
<b>INSERT PANEL</b>	44 mm thick, triple glazing $U_g$ 0,9 W/m <sup>2</sup> K, with warm edge
<b>ATTACHMENT PANEL</b>	48 mm thick, triple glazing $U_g$ 0,9 W/m <sup>2</sup> K with warm edge
<b>COLOUR</b>	door with panel in RAL 9016 traffic white (more colours for a surcharge)
<b>LOCK</b>	automatic-lock as multipoint locking with daytime function, without E-opener
<b>CYLINDER</b>	profile cylinder with emergency and danger function, drill protection and 5 keys
<b>HINGES</b>	3 concealed hinges 3 3-piece roller conveyors and 2 hinge-side securities
<b>MAX. SIZE</b>	1150 x 2250 mm frame outer dimension
<b>MIN. SIZE</b>	1010 x 2050 mm frame outer dimension
<b><math>U_g</math>-VALUE</b>	1,2 W/m <sup>2</sup> K*
<b>HANDLES</b>	stainless steel handle bar 600 mm outside (HT A 21-113, 117, 122, 123, 124 and 125) stainless steel handle bar 1000 mm outside (HT A 21-127, 128, 129, 131, 132 and 133) stainless steel handle bar 1600 mm outside (HT A 21-105, 106, 107, 108, 115, 119, 120 and 126) stainless steel handle bar 1600 mm outside (HT A 21-701, 702, 703, 705, 706, 707, 709 and 710)

## INSERT PANEL



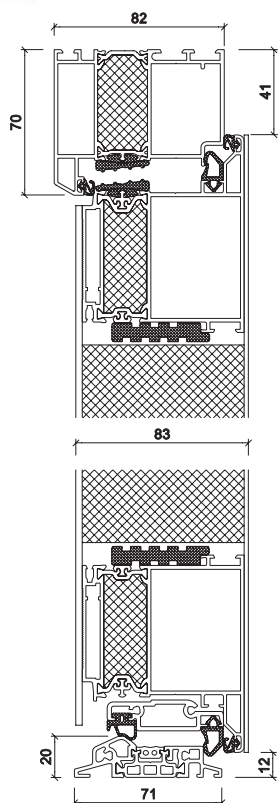
## ATTACHMENT PANEL



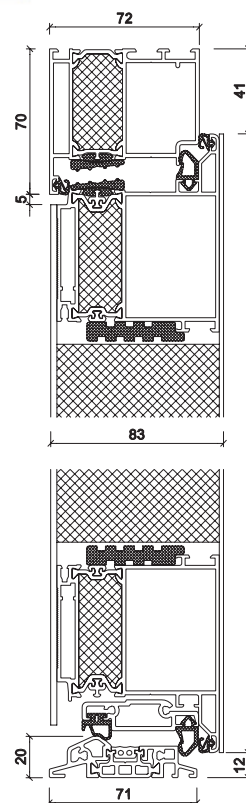
# TECHNICAL DATA

<b>MATERIAL</b>	aluminium
<b>SYSTEM</b>	AT 82 / AT 72
<b>PANEL</b>	85 mm thick, triple glazing $U_g$ 0,6 W/m <sup>2</sup> K, with warm edge glazing inside and outside with tempered execution
<b>COLOUR</b>	door with panel in standard colours according to our aluminium colour chart (no wood decors possible) Finestructure and highly weather resistant as far as possible Both sides same colour or outside colour, inside white
<b>LOCK</b>	automatic-lock as multipoint locking with daytime function, without E-opener
<b>CYLINDER</b>	profile cylinder with emergency and danger function, drill protection and 5 keys
<b>HINGES</b>	3 3-piece roller conveyors and 2 hinge-side securities
<b>MAX. SIZE</b>	1150 x 2250 mm frame outer dimension
<b>MIN. SIZE</b>	980 x 1980 mm frame outer dimension
<b><math>U_o</math>-VALUE</b>	0,85 W/m <sup>2</sup> K*   HT A 21-201, 203, 213, 220, 221 and 222 0,91 W/m <sup>2</sup> K*   HT A 21-215 0,94 W/m <sup>2</sup> K*   HT A 21-205 and 206 1,00 W/m <sup>2</sup> K*   HT A 21-208, 211, 216, 218 and 223
<b>HANDLES</b>	freely selectable, see page 26

AT 82



AT 72



\* Calculation basis  $U_o$ -value according to DIN EN ISO 10077-1 (door size 1150 x 2200 mm)

## OVERVIEW

	BASIC	BASIC <sup>+</sup>	PREMIUM	PREMIUM <sup>+</sup>
colour white (HWF-RAL9016-FMA traffic white)	✓	✓	✓	✓
colours pg 1-2	●	●	✓	✓
colours pg 3-5	✗	✗	●	●
insert panel	✓	✓	✗	✗
attachment panel one-sided	✗	✓	●	✗
attachment panel both-sided	✗	✗	✓	✓
profile cylinder	✓	✓	✓	✓
electric opener	●	●	●	●
automatic lock as multipoint locking with <b>daytime function</b>	✓	✓	✓	●
automatic lock as multipoint locking with <b>M-Opener</b>	●	●	●	●
full motorized lock	●	●	●	✓
exposed hinges	✓	✓	✓	●
concealed hinges	✗	✗	●	✓
handles freely selectable	✗	✗	✓	✗
glazing freely selectable	✗	✗	✓	●
fingerprint in the door leaf (if technically possible)	✗	✗	●	●
fingerprint in the handle (if technically possible)	✗	✗	●	●
safety execution RC2 *	●	●	●	✓

already included ✓

not possible ✗

selectable ●

# ALSO AVAILABLE

## SIDE LIGHTS

ST A 1, ST A 2 and ST A 3 possible

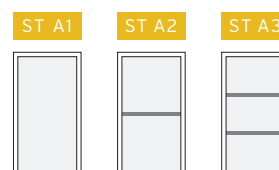
## GLAZING

VSG 6 mm

## SASH EXECUTION

Execution attachment panel one-sided

Execution total concealed hinges, only possible for inward opening



## ACCESS OPTIONS

Electric opener

Automatic lock as multipoint locking with M-Opener

Full motorized lock without adaptor

## SECURITY / MISCELLANEOUS

Safety execution RC2 for entrance door and side lights

Mirror on the inside of the entrance door

LED lighting HT A 21-215

Sandblasted glass with clear edge or clear stripes (entrance door and/or side light) per door or side light

## COLOURS

pg 3-5

### NOTE

There might be slight deviations in colour due to printing process.

# **KNEER · SÜD** **FENSTER**

Lived Vision



## **KNEER GmbH** **Fenster und Türen**

Horst-Kneer-Straße 1  
D-72589 Westerheim  
phone: +49 (0) 7333 / 83-0  
e-mail: [info@kneer.de](mailto:info@kneer.de)

## **SÜD-FENSTERWERK** **GmbH & Co. Betriebs-KG**

Rothenburger Straße 39  
D-91625 Schnelldorf  
phone: +49 (0) 7950 / 81-0  
e-mail: [info@suedfenster.de](mailto:info@suedfenster.de)

## **SÜD-BAUELEMENTE GmbH**

Ludwig-Erhard-Straße 4  
D-03238 Massen  
phone: +49 (0) 3531 / 799-114  
e-mail: [info@suedfenster.de](mailto:info@suedfenster.de)



**[WWW.KNEER-SUEDFENSTER.DE](http://WWW.KNEER-SUEDFENSTER.DE)**

Your Kneer-Südfenster specialized dealer: